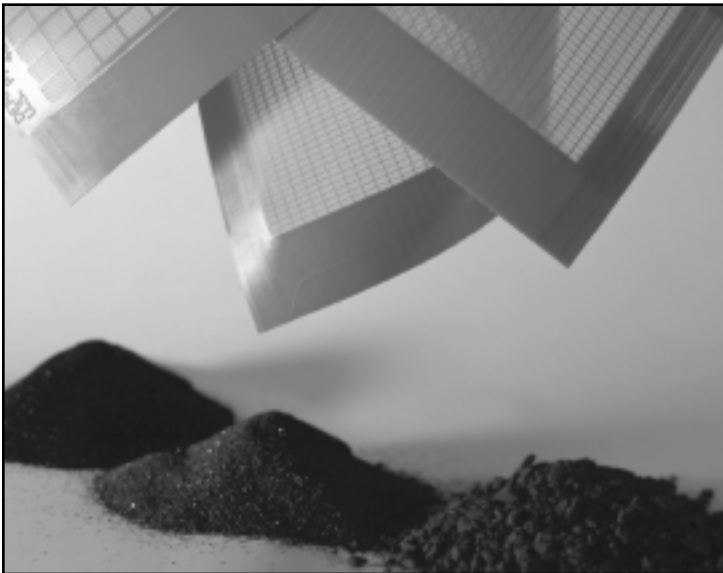
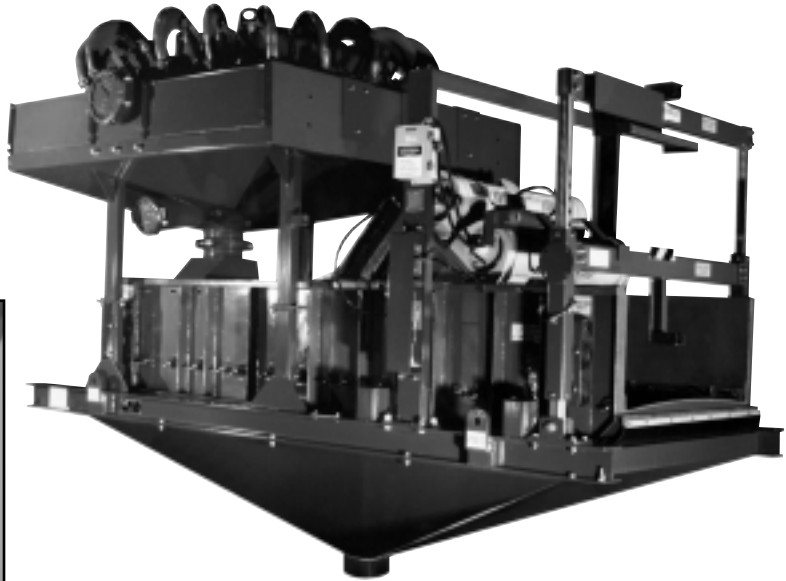




Coke Fines Recovery System

DERRICK HI-G™ DRYER

- Remove fine particles from 20-400 mesh
- Positive solids conveyance
- No screen plugging
- Flow rates up to 1,500 GPM
- Complete skid mounted system
- Adjustable angle



DEWATERING AND REMOVAL FROM

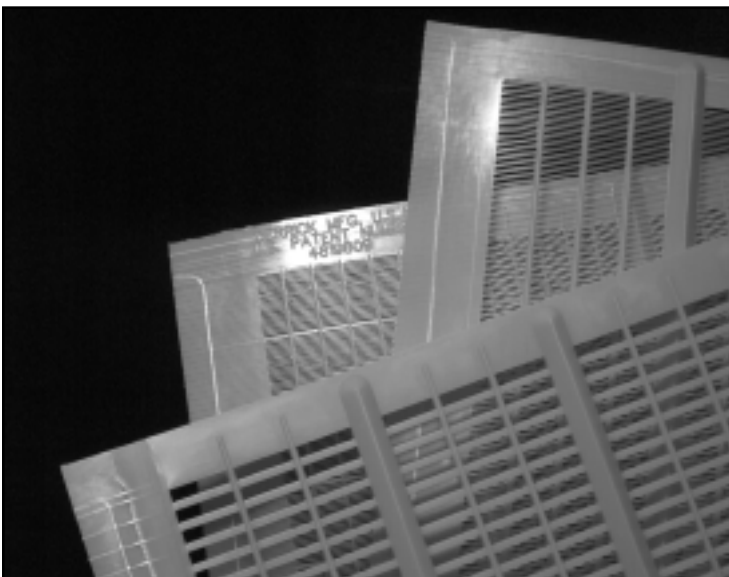
- Coke storage yard runoff
- Sluice way water flow
- Clarifier or settling box
- Settling ponds

SOLIDS REMOVAL ELIMINATES

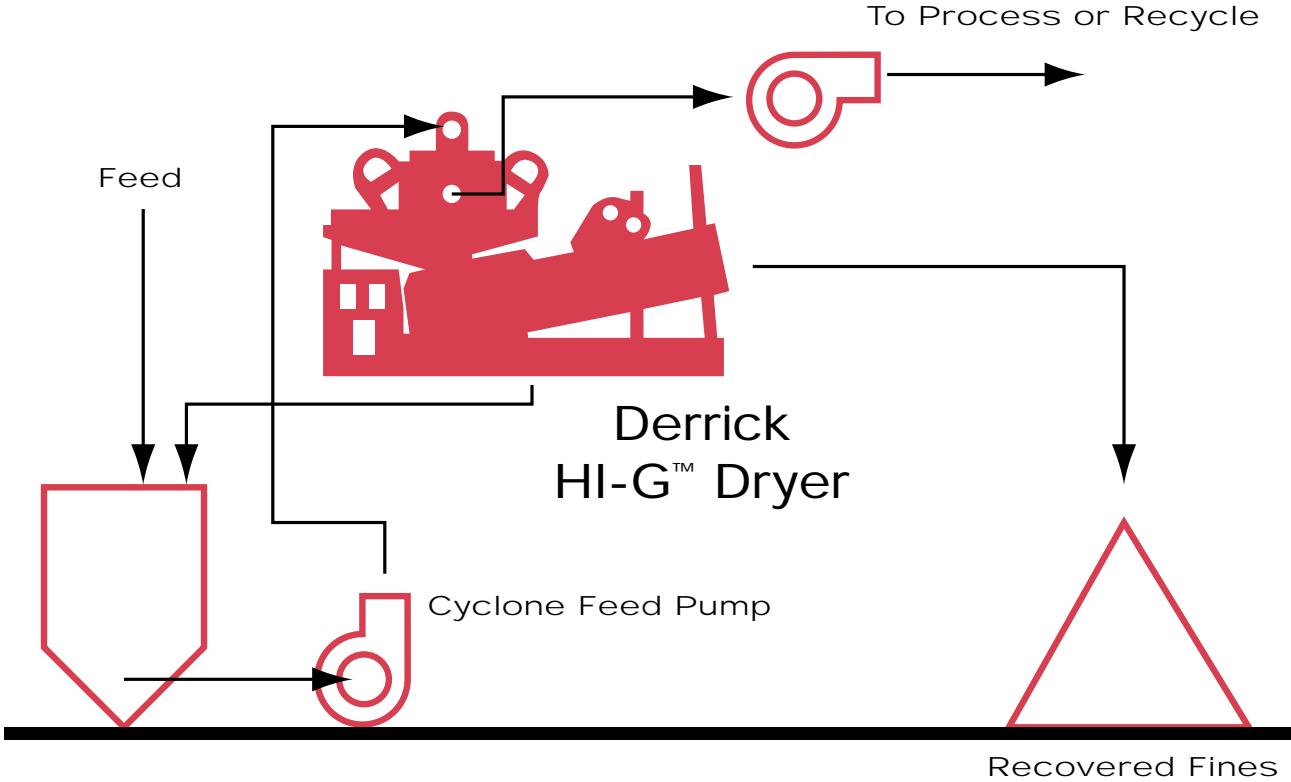
- Fines from coke cutting water going to pumps
- Fines run off into plant environmental waste treatment facility

OPERATION OF SYSTEM

Water containing fines is pumped into the Derrick 20 hydrocyclone manifold where solids down to 14 microns are removed. Solids leave the hydrocyclones and pass onto the high open area urethane panels where they are dried and conveyed for recovery. Liquid that passes the urethane panel is returned to the hydrocyclone manifold for processing.



Recovery System Flow Diagram



Serving all our customers worldwide: www.derrickcorp.com
590 Duke Road • Buffalo, New York 14225
Phone: (716) 683-9010 • Fax: (716) 683-4991